

# onSafe Tracker Box

## onSafe Intelligent Video Setup application



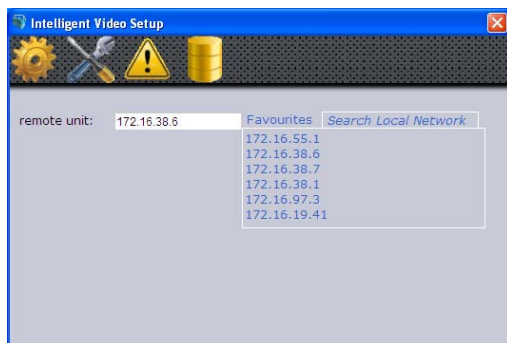
### INTRODUCTION

The onSafe Intelligent video setup application is the companion tool of the Tracker Box for easy and fast installations. It features:

- Quick overall installation.
- Intuitive and simple device configuration.
- Easy verification of correct detection of video events.
- Tools to capture and pack all significant device operating data if supplier support is required.
- Setup either on-site or remotely.

### EASY INSTALLATIONS

The onSafe Intelligent video setup software can be quickly installed in any PC and it is very easy to use thanks to his simple, clean and intuitive user interface.



All analytics devices on the network will be discovered and listed. The favourite's option allows you to remember certain number of systems. Select which unit to configure and then click any of the configuration buttons.

From the start menu you have access to all setup options and alert consoles:

- Video analytics (⚙️): rules and events configuration, import/export rules .
- Device settings (🔧): setup of network parameters, outputs and inputs actions, user's profiles, etc.

- Device operations (📺): Cameras Armed/Disarmed, Device reboot options., Technical support functionality, Cameras status visualization
- Real time alerts (⚠️): Console to receive picture alerts in real time.
- Stored Alerts (📁): Access to the last alerts and alert pictures generated and stored on the tracker box.
- Analysis Statistics (📊): Generated alerts statistics

### EASY RULE EDITOR

The tracker box setup is simple; it avoids complicated previous calibrations and odd configurations. You only have to select the rule to use (tripwire, double tripwire, area of interest, scene or camera tamper), choose the type of object that will trigger that event (human, vehicle or anything) and the action to detect (crossing, entering, appearing, loitering, left behind ...) All available option will be listed on drop-down menus.

As an example, if it is not allowed to park cars on a restricted area, an Area Of Interest rule have to be chosen, the Object should be a Vehicle and Loitering the action selected. Then the area to protect has to be drawn and the elapsed time before the alert is triggered defined. That's all required.

System behavior can be improved using object filters (🔍): Object abrupt shape and direction changes, minimum or maximum size and size changes, etc. False alerts triggered by very small or too big objects, tree foliage movement or water waves can be easily avoided using these tools.

In order to limit video content analysis to specific time, timetables can be defined (📅).

Import/Export functionality.

## SYSTEM CONFIGURATION

The intuitive wizard launched by the Device settings icon (⚙️) will configure the system parameters and actions:



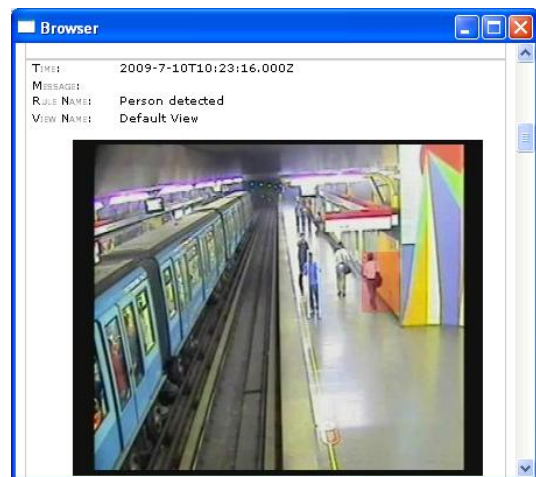
- Configure the network parameters of the device such as IP address and default gateway.
- Set the date and time of the unit or configure it to synchronize with an ntp time server.
- Program the actions the relays have to perform whenever a rule is breached.
- Specify if the state of the inputs should be used to enable or disable video analytics in one or more cameras. This will, for instance, prevent alerts to be sent on known situations (maintenance people, guards rounds, ...)
- Edit different user profiles.
- Configuration of video parameters

## VERIFICATION AND SUPPORT

The Real time alarm console (⚠️) helps you to easily check the correct setup of the video analytics unit. Whenever a rule is breached it will show a picture of the scene with a mark on the object that triggered it. Also, if the system has been running for a while and you want to check the last alarms generated, the stored alarms (📁) option will display the pictures and marks of the last events detected and still stored within the unit memory.

If support is needed, the IVS has an option to pack all configuration parameters. That includes snapshots of the camera's view and complete information of analytics configuration. This data may be sent to support personnel to help diagnosing the system behavior.

Analysis statistics function and breached rules counting.



## BENEFITS

- ✓ **Easy and friendly system configuration, setting and verification from PC with a single application.**
- ✓ **Intuitive and simple analysis rules**
- ✓ **All information is listed in drop-down menus. The user do not has to guess values, he only will have to select.**
- ✓ **Comprehensive visual information to quickly check camera state and rule edition.**
- ✓ **Simple and useful remote support: all device operative information data is quickly retrieved and packed ready to be sent.**
- ✓ **The capability to arm - disarm (enable-disable) of video content analysis in the cameras by means of contact inputs can be set.**
- ✓ **Import/Export rules function.**
- ✓ **Access to Generated alert statistics .**